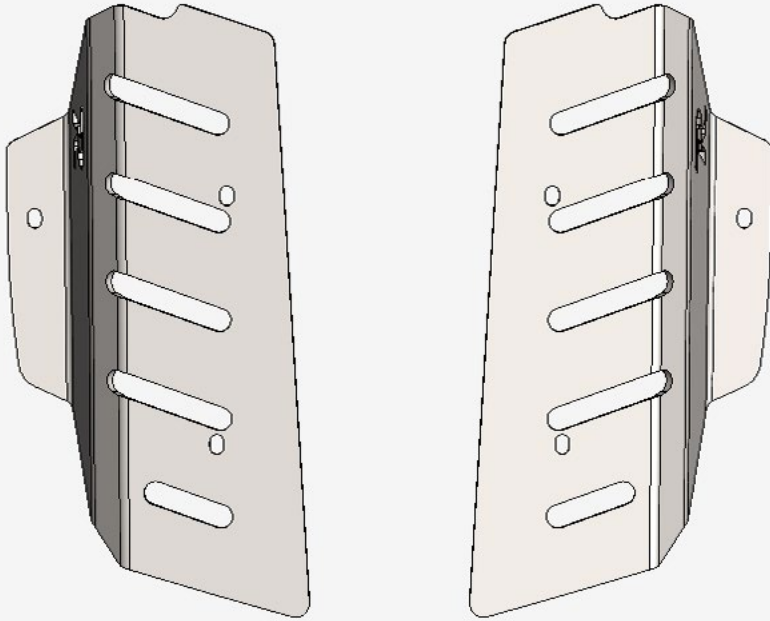


A-PILLAR LIGHT MOUNTS 2024-UP/TOYOTA LAND CRUISER AC7707701NA



TOOLS REQUIRED

- 10mm Sockets
- 17/64, 25/64 Drill Bit
- Rivet Nut Hand Tool
 - 5/32 Hex
- Tape Measure

SKILL LEVEL

- Easy

TIME REQUIRED

- Approximately 1 Hour

WARNINGS/CAUTIONS BEFORE STARTING INSTALLATION

-BEFORE YOU INSTALL THIS KIT-

Read and understand all instructions, warnings, cautions, & notes contained in this installation instruction guide. Consult your vehicle owner's manual for proper disconnection of electrical and lifting of vehicle if required for installation of this product.

This install may require some technical skills and knowledge of basic mechanical work. If you do not feel that you are capable of performing this install please take this product to a trained professional.

After reading this guide please contact us with any questions or concerns before installing product.

Customer Service: 830-896-7571

Rago Fabrication is **not** responsible for any bodily injury or harm to you or your vehicle as a result of an improper install.

Proper installation of this kit required knowledge of the factory recommended procedures for removal and installation of original equipment components.

We recommend that the factory shop manual and any special tools needed to service your vehicle be on hand during the installation. Installation of this kit without proper knowledge of the factory recommended procedures may affect the

performance of these components and the safety of the vehicle.

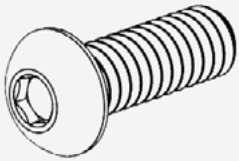
Inspect all contents of this package to make sure product is not damaged and all installation hardware has been included. If parts are missing from kit, please be prepared to provide the following information:

1. Name of purchase location
2. Bar Code on side of box
3. Date above bar code
4. Date inside box cover

***ALWAYS WEAR EYE PROTECTION
WHEN OPERATING POWER TOOLS***

HARDWARE

A.



M6-1.0MM X 40MM BUTTON HEAD BOLT

QTY: 6

A1.



M6 FLAT WASHER

QTY: 6

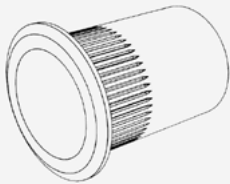
A2.



M6 PUSH NUT

QTY: 6

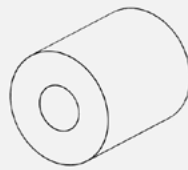
B.



M6-1.0MM RIVET NUT

QTY: 4

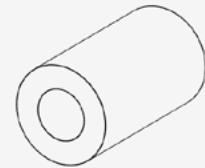
C.



1/2" NYLON SPACER

QTY: 2

D.



7/8" NYLON SPACER

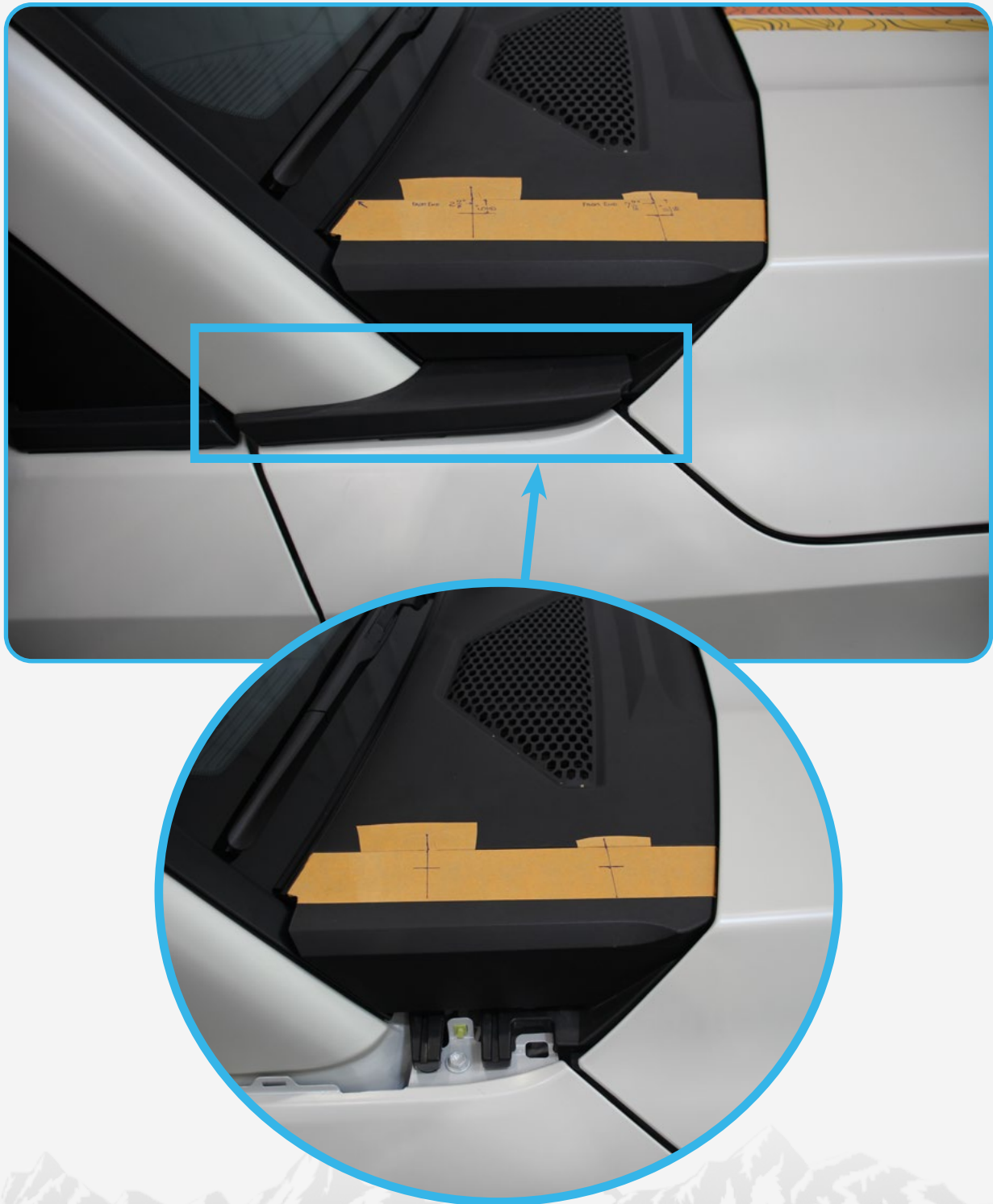
QTY: 4

Reference this page throughout the install



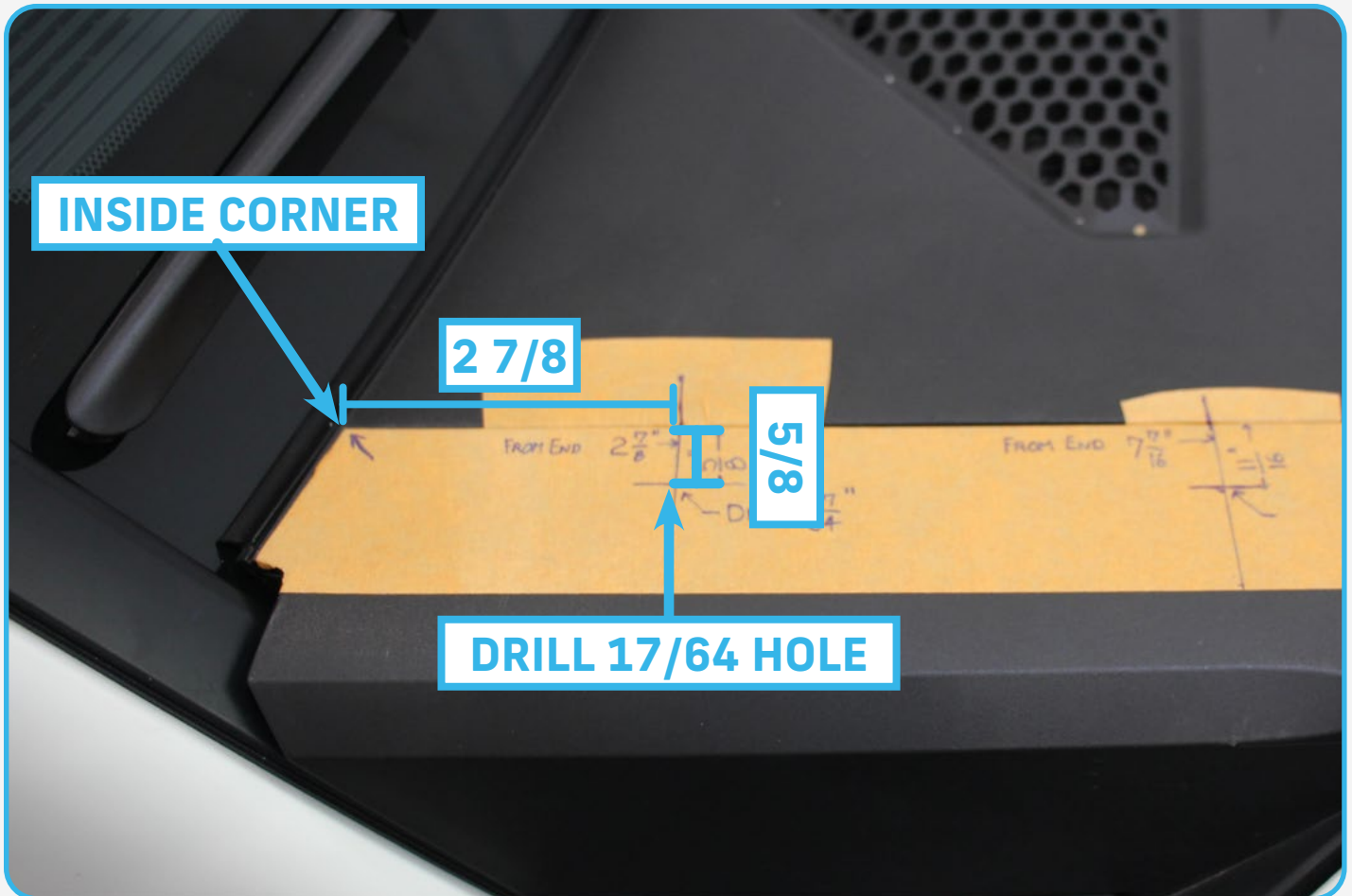
□ STEP 1

Remove the plastic panel shown below by pulling.



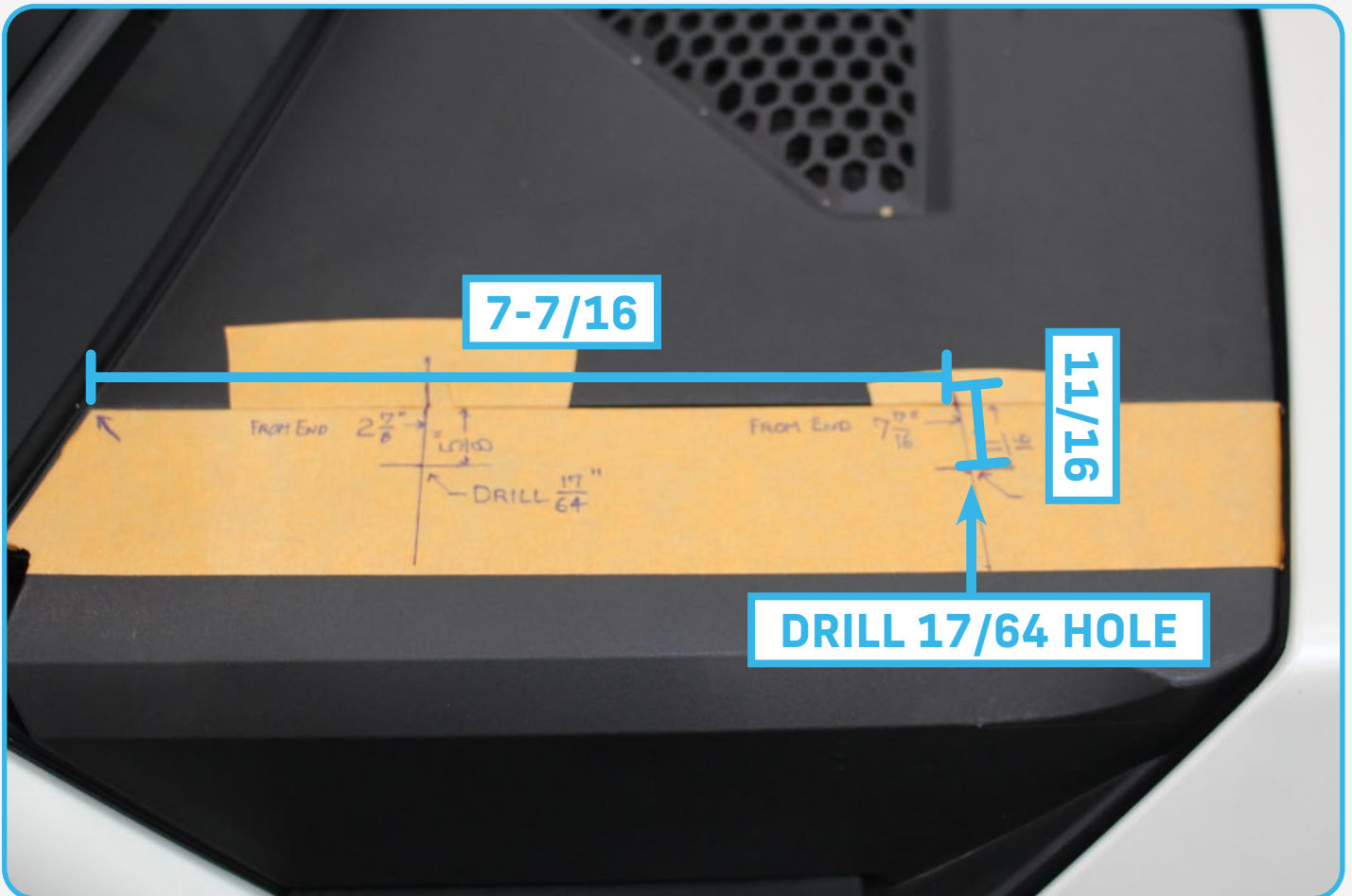
□ STEP 2

Apply masking tape and mark out the holes as shown below. Measure from the inside corner.



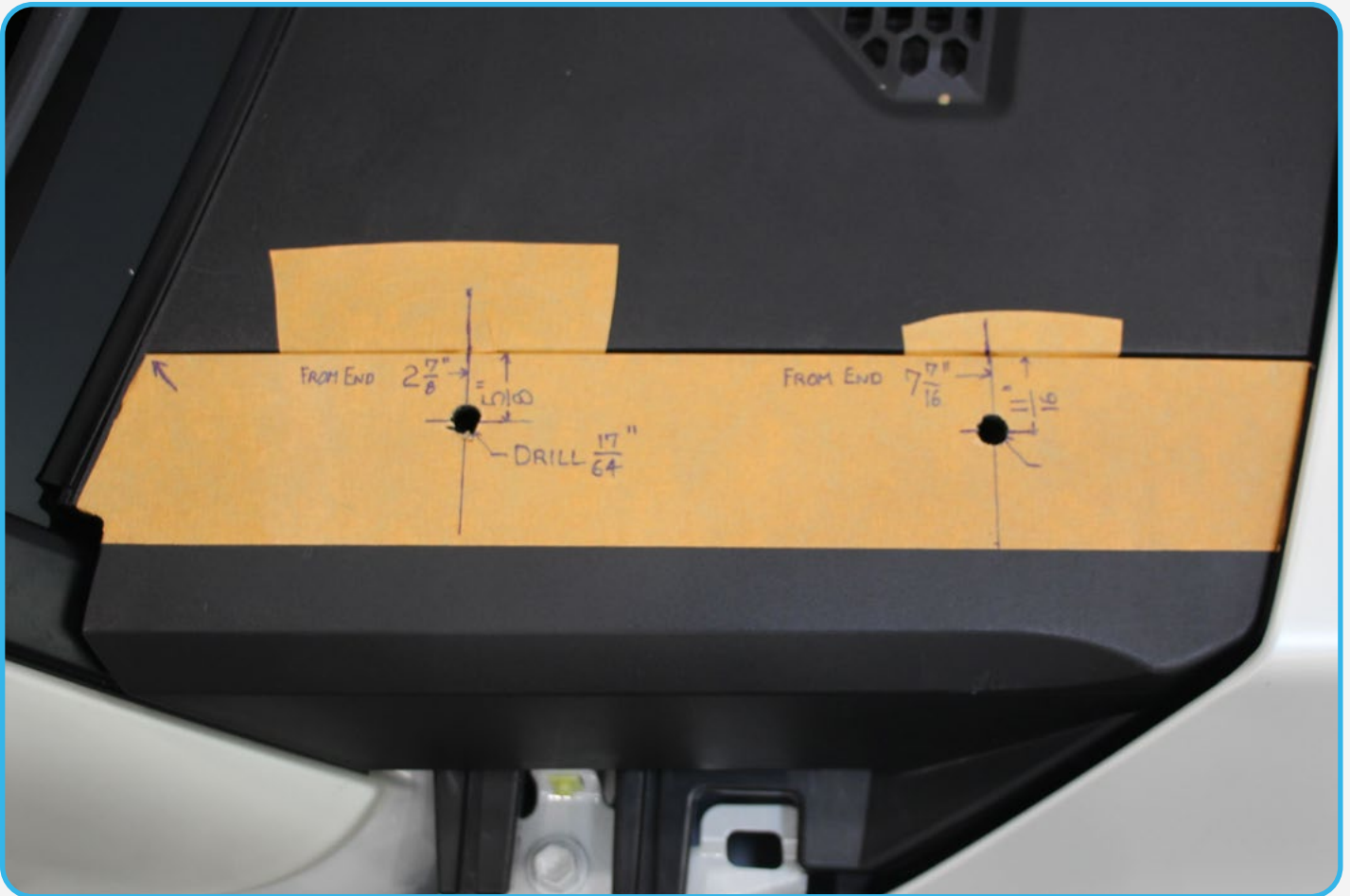
STEP 3

Apply masking tape and mark out the holes as shown below. Measure from the inside corner.



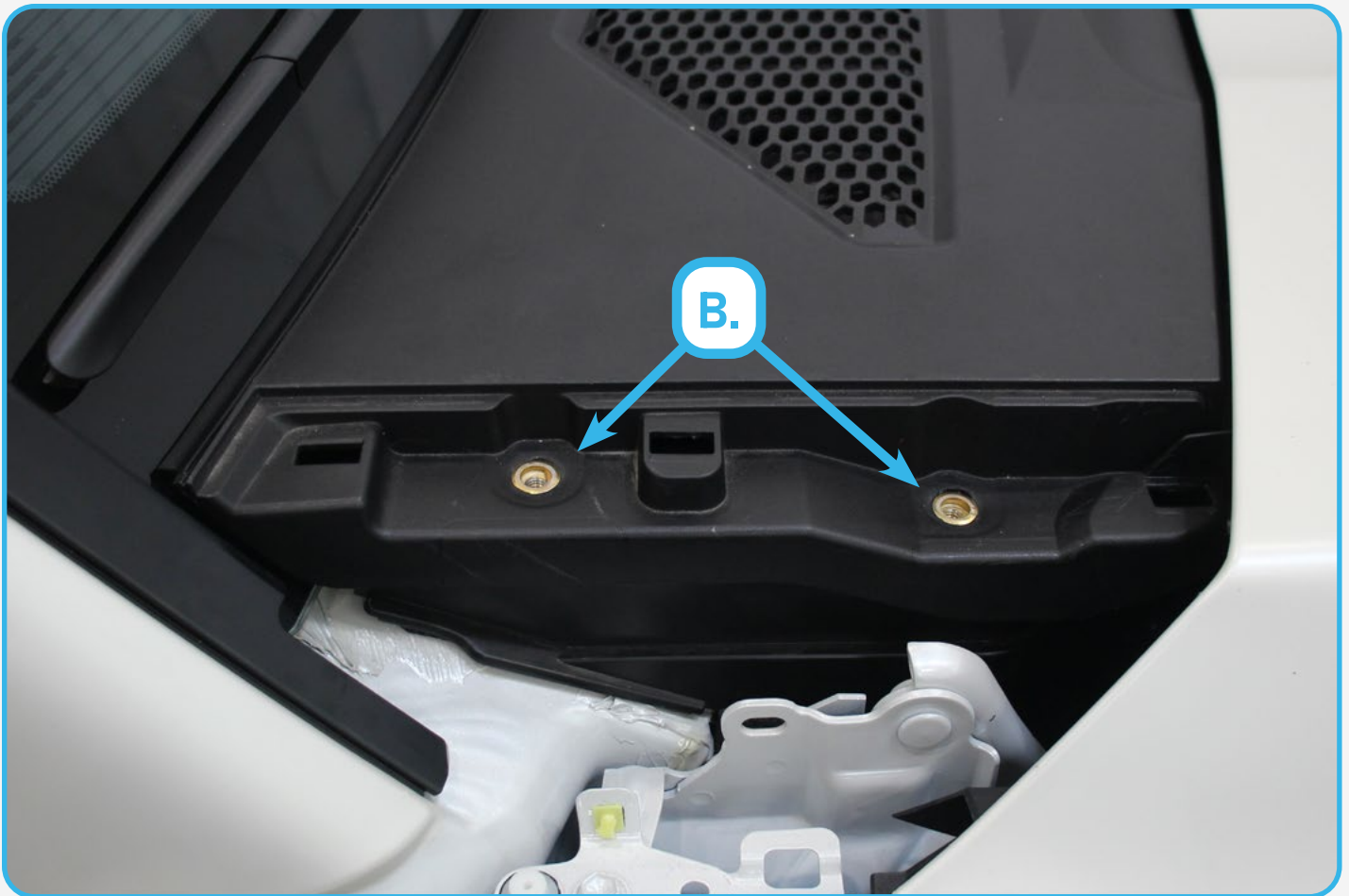
□ STEP 4

Using a (17/64 Drill Bit), Drill the holes marked from **steps 2 & 3**.



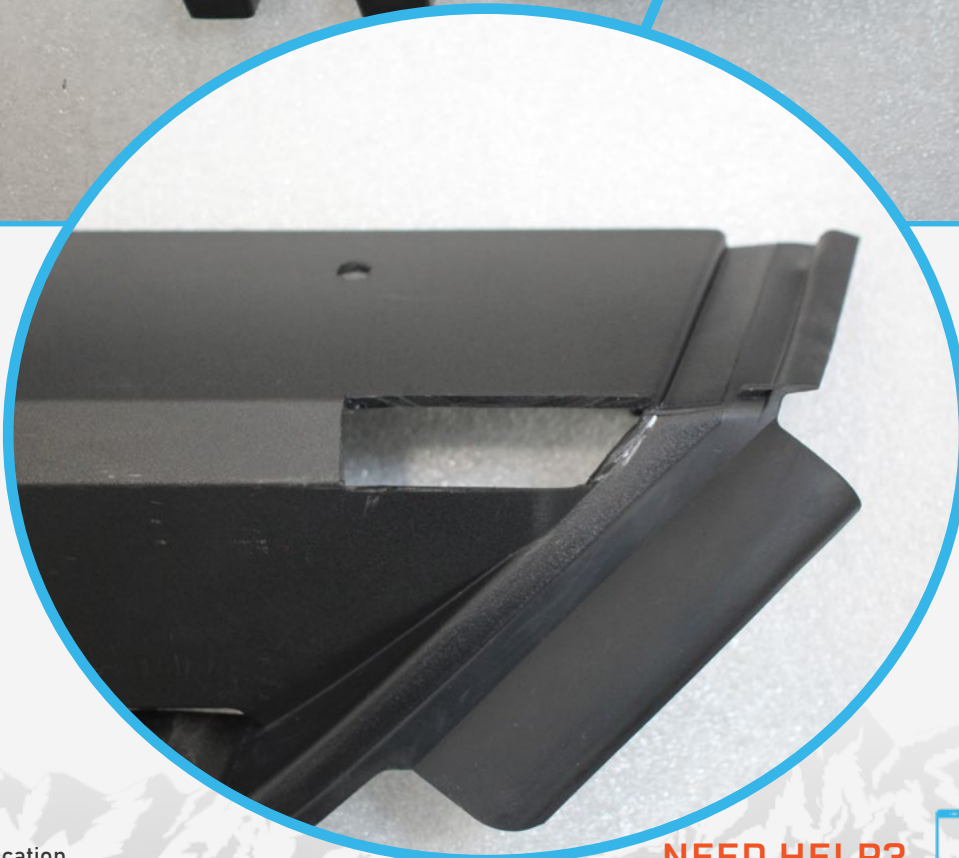
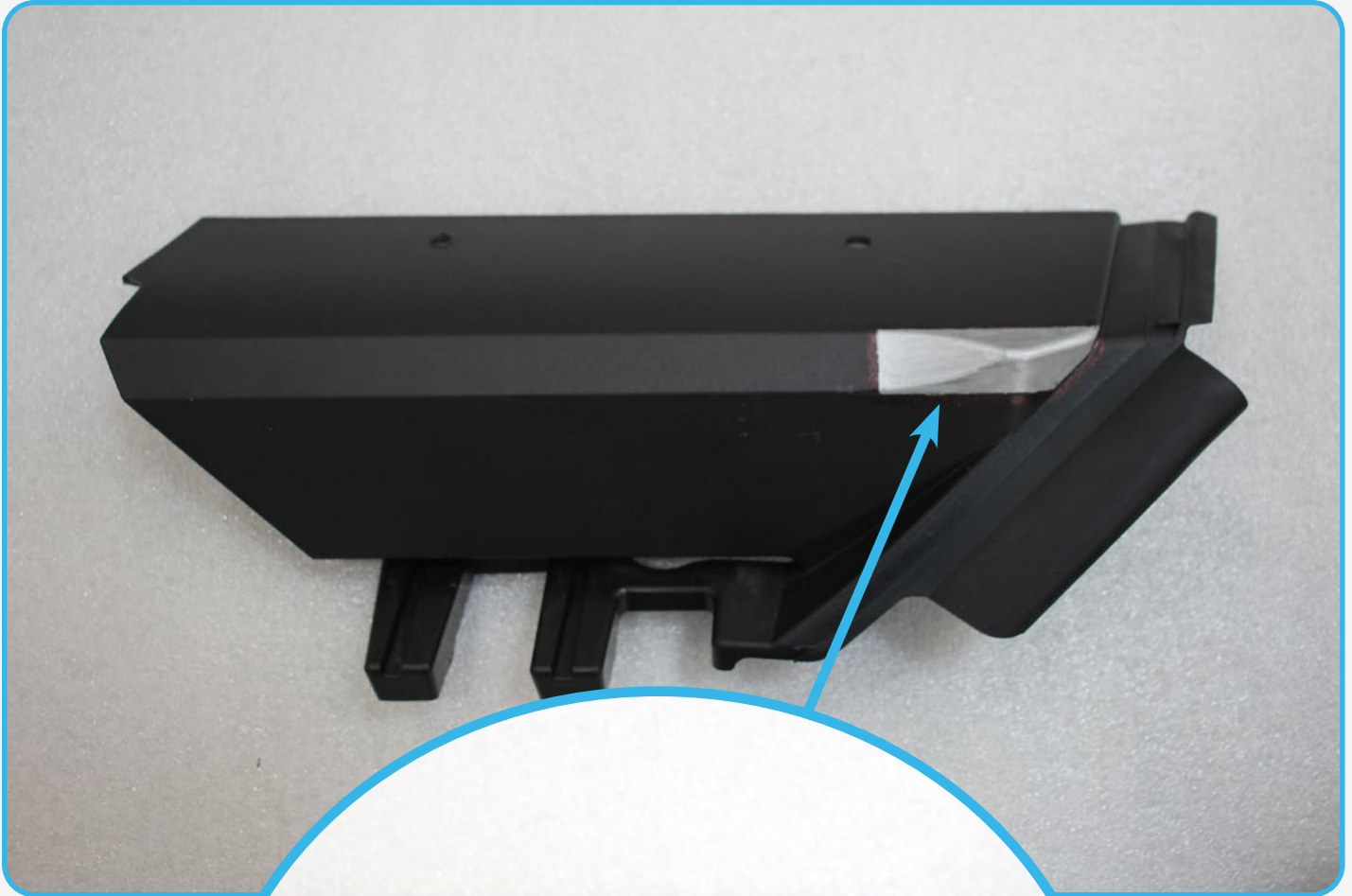
□ STEP 5

Remove the plastic from **step 4**, Next, Using a (25/64 drill bit) open the holes shown below and install the provided (B) Rivet nuts using a (Rivet nut hand tool). Repeat on other side.



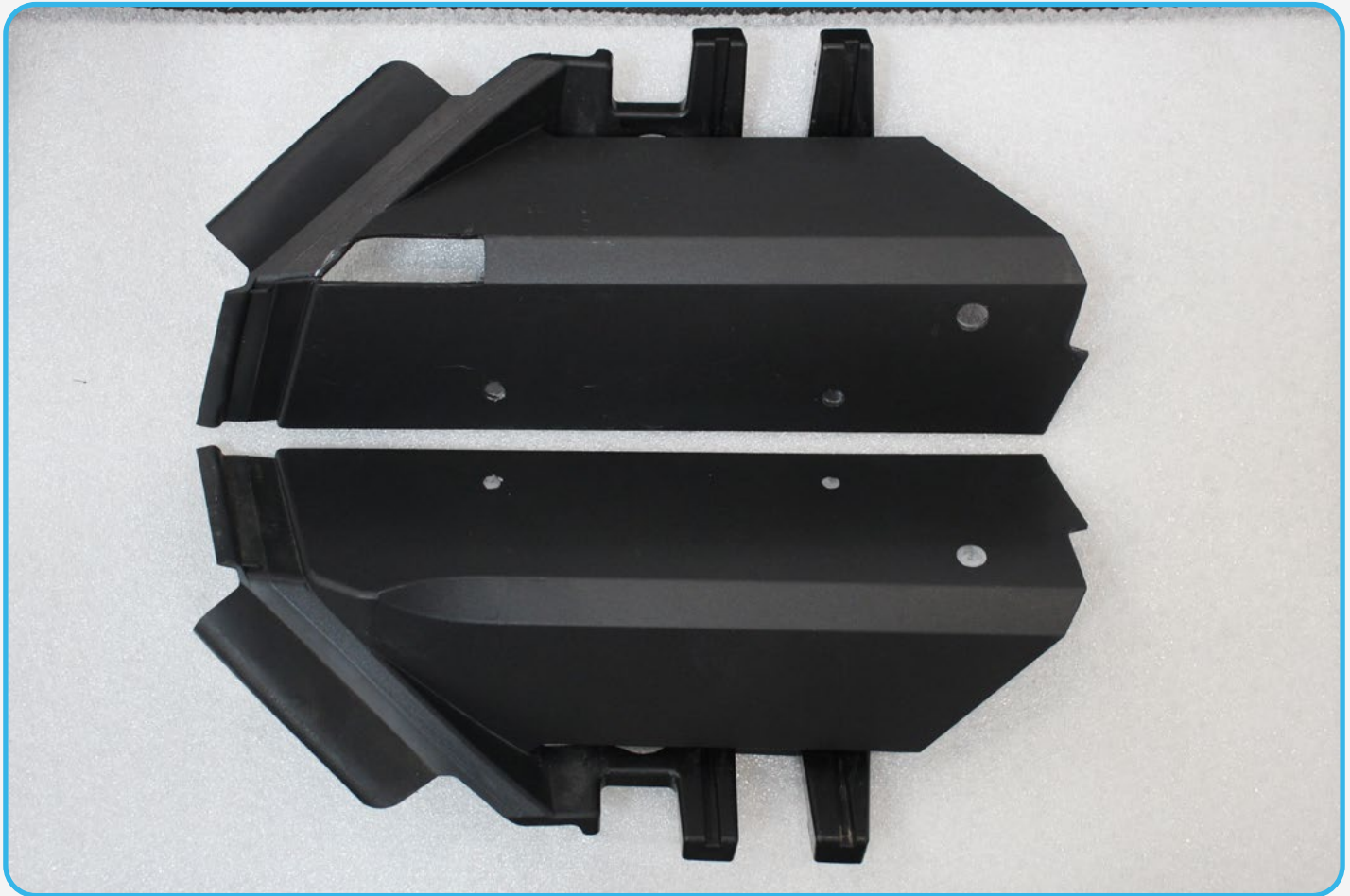
□ STEP 6

Mark the indicated corner and remove. (NOTE: Prior to cutting, Check that the material being removed will not be visible when installed).



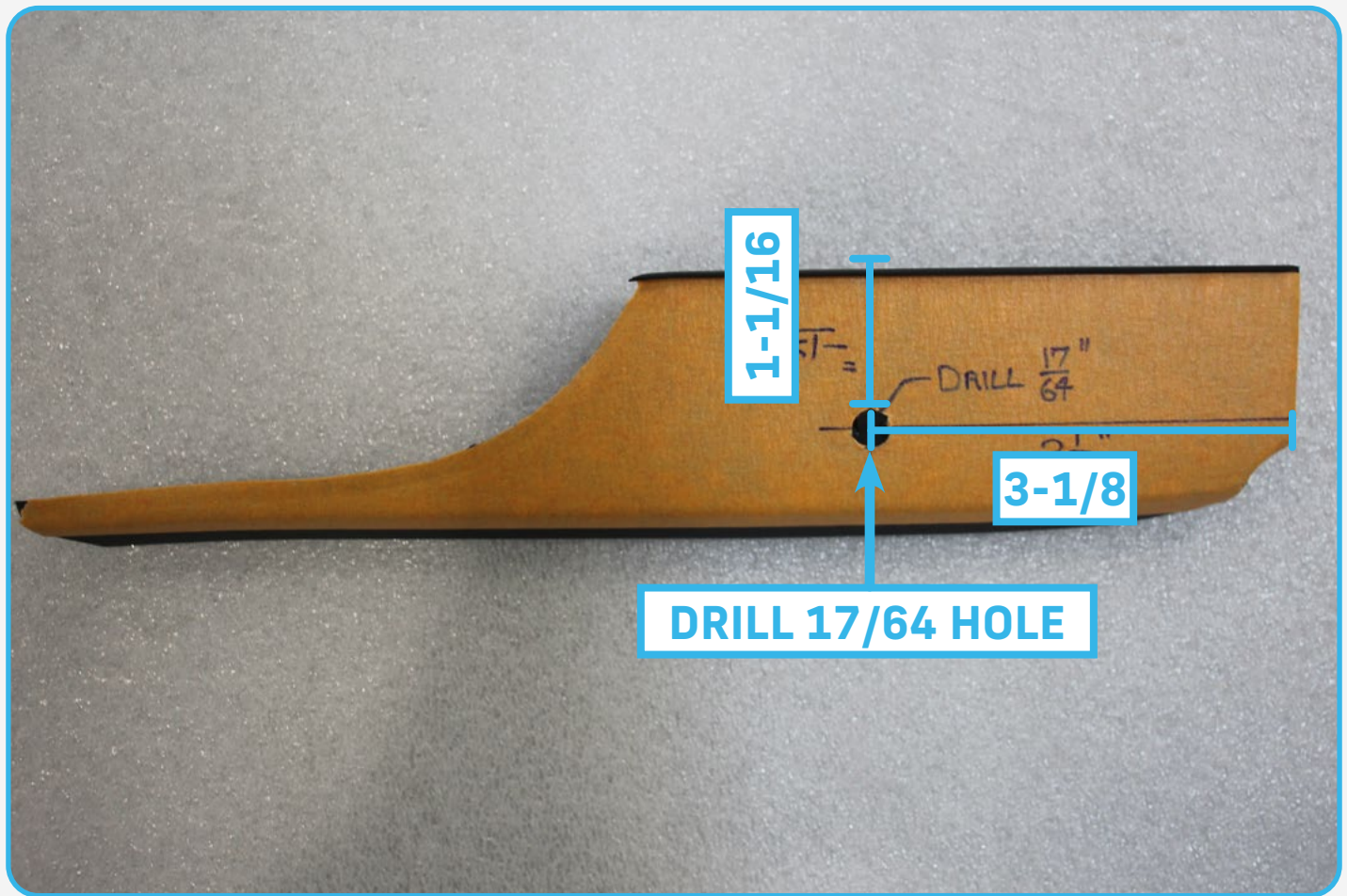
STEP 7

Transfer mounting holes and corner relief to the opposite plastic panel.



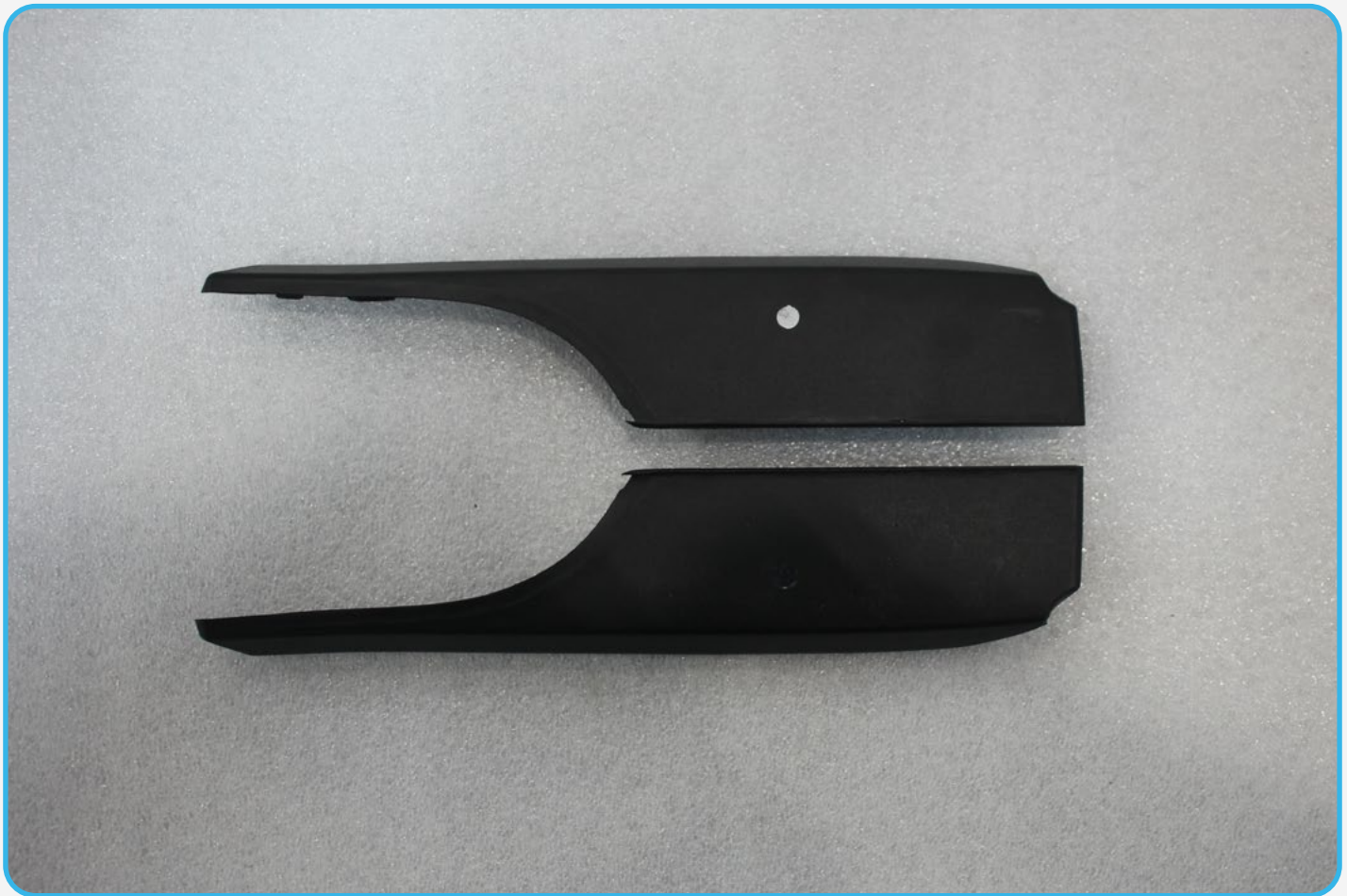
□ STEP 8

Measure out the mounting hole as shown below. Next, Drill the hole using a (17/64 drill bit).



STEP 9

Transfer mounting holes to the opposite plastic panel.



□ STEP 10

Using a (10mm socket), Remove the hardware shown below.



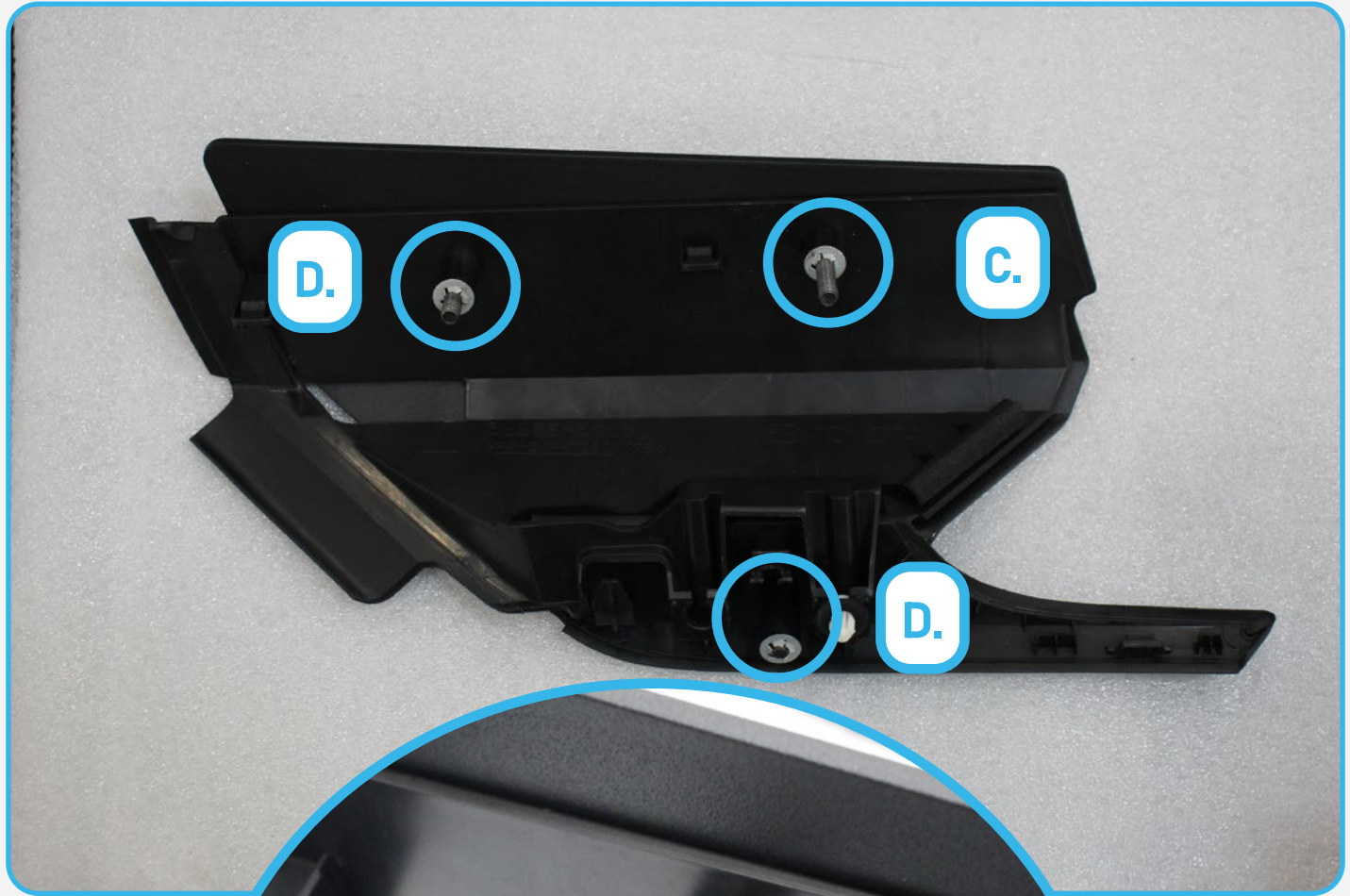
□ STEP 11

Temporarily set the light mount in position and mark out the mounting hole for any desired light configurations. (NOTE: Cycle windshield wipers to ensure that there will be no contact with light prior to drilling)



□ STEP 12

Using the provided **(D), (C), (A, A1, A2)** spacers and hardware, Assemble the mount to the plastic in the locations shown below.



□ STEP 13

Rout light wiring along the windshield trim as shown below before fully mounting.



STEP 14

Using a (5/32 allen), install the light mount with the plastic as shown below.



STEP 15

Stand back and enjoy your new RAGO A-Pillar Light Mounts.

Check and re-tighten all mounting bolts after 100 miles and periodically thereafter.

