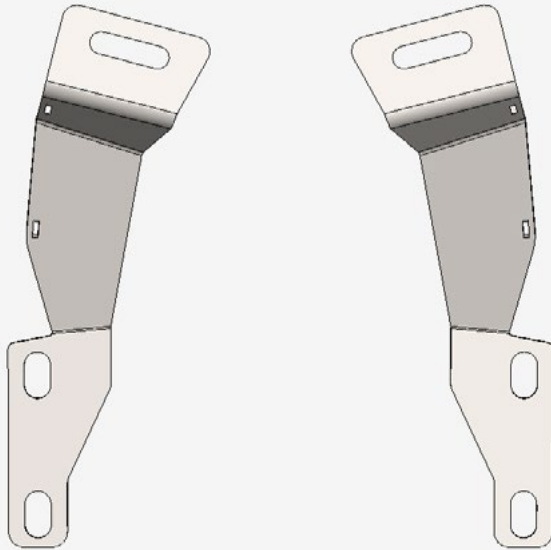


DITCH LIGHT BRACKET 2024/TOYOTA TUNDRA AC6701801NA



TOOLS REQUIRED

-12mm Wrench



SKILL LEVEL

- Easy



TIME REQUIRED

- Approximately 30 minutes

⚠️ WARNINGS/CAUTIONS BEFORE STARTING INSTALLATION ⚠️

-BEFORE YOU INSTALL THIS KIT-

Read and understand all instructions, warnings, cautions, & notes contained in this installation instruction guide. Consult your vehicle owner's manual for proper disconnection of electrical and lifting of vehicle if required for installation of this product.

This install may require some technical skills and knowledge of basic mechanical work. If you do not feel that you are capable of performing this install please take this product to a trained professional.

After reading this guide please contact us with any questions or concerns before installing product.

Customer Service: 830-896-7571
Rago Fabrication is not responsible for any bodily injury or harm to you or your vehicle as a result of an improper install.

Proper installation of this kit required knowledge of the factory recommended procedures for removal and installation of original equipment components.

We recommend that the factory shop manual and any special tools needed to service your vehicle be on hand during the installation. Installation of this kit without proper knowledge of the factory recommended procedures may affect the

performance of these components and the safety of the vehicle.

Inspect all contents of this package to make sure product is not damaged and all installation hardware has been included. If parts are missing from kit, please be prepared to provide the following information:

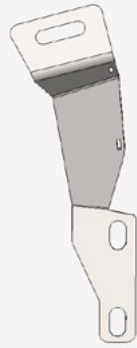
1. Name of purchase location
2. Bar Code on side of box
3. Date above bar code
4. Date inside box cover

***ALWAYS WEAR EYE PROTECTION
WHEN OPERATING POWER TOOLS***

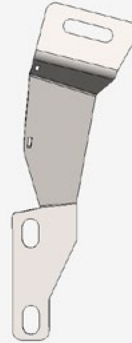
□ STEP 1

Open the hood and locate the hood bolts. This is where you will install your new ditch light brackets.

Passenger



Driver



STEP 2

Remove the top bolt shown below using a (12mm wrench). (Repeat on other side) (Keep the hardware removed).



□ STEP 3

Install the bracket using the same top bolt removed from **step 2**. (Do not fully tighten due to having adjustment for step 4 and 5).



STEP 4

Remove the lower bolt shown below using a (12mm wrench). (Repeat on other side) (Keep the hardware).



□ STEP 5

Slide the bracket over the bottom hole and install the bottom bolt removed from **step 6**. Tighten all hardware.



STEP 6

Double check all hardware and fitment for security.

Enjoy your new Rago Ditch Light Brackets.

